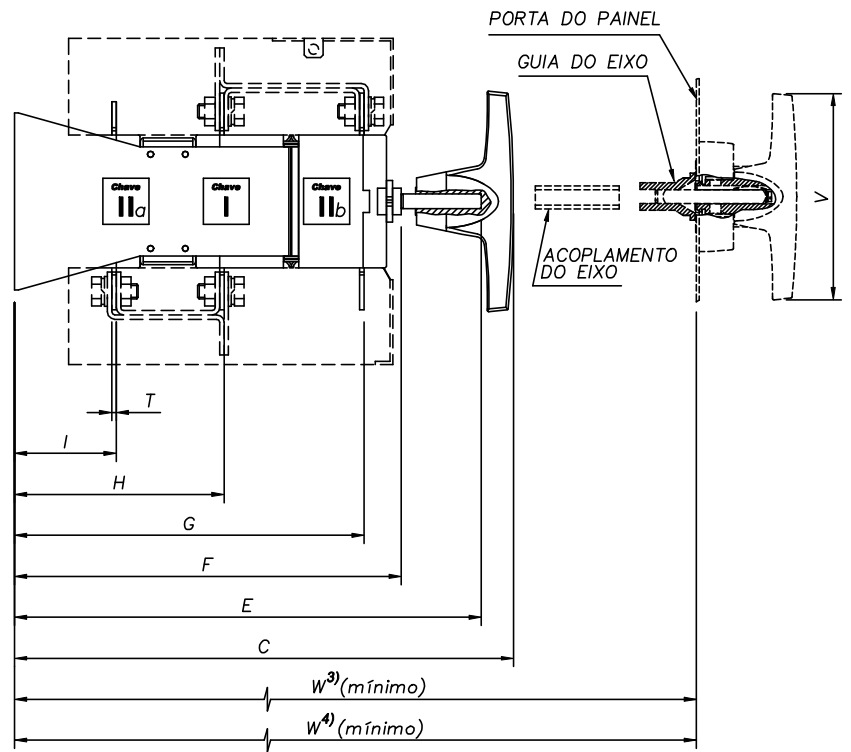
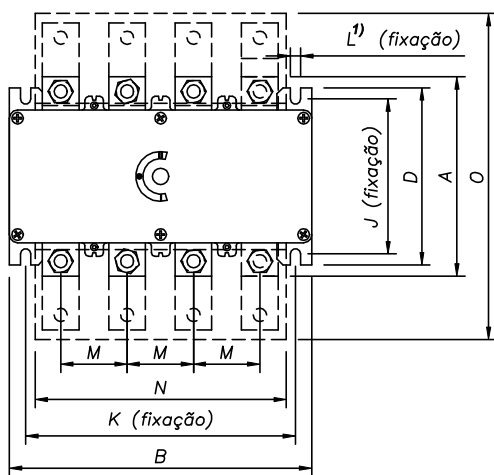
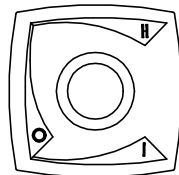
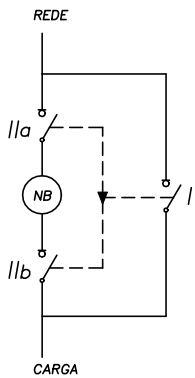


BYP32 63/100/160/250/400/630/1000/1250/1600

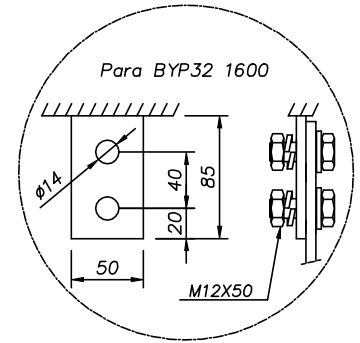
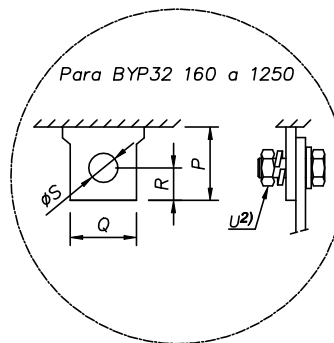


Esquema de ligação



Chave de 3 posições intertravadas:
 Posição I - chave I fechada
 Posição II - chaves II fechadas
 Posição 0 - chave I e chaves II abertas

NB = No Break/Equipamento



Chave	A	B	C	D	E	F	G	H	I	J	K	L ¹⁾
BYP32 63	83	134	293	71	265	214	191	108	59	58	120	5.5 (M5x16)
BYP32 100	83	134	293	71	265	214	191	108	59	58	120	5.5 (M5x16)
BYP32 160	122	162	320	115	299	240	217	132	64	101	135	6.5 (M6x16)
BYP32 250	135	208	350	125	324	263	237	142	69	111	181	7 (M6x16)
BYP32 400	147	208	350	125	324	263	237	142	69	111	181	7 (M6x16)
BYP32 630	193	297	484	172	449	370	332	195	97	158	265	9 (M8x20)
BYP32 1000	204	297	484	172	449	370	332	195	97	158	265	9 (M8x20)
BYP32 1250	290	391	621	230	509	434	389	229	112	205	353	9 (M8x20)
BYP32 1600	360	391	621	230	509	434	389	229	112	205	353	9 (M8x20)

Chave	M	N	O	P	Q	R	S	T	U ²⁾	V	W ³⁾	W ⁴⁾
BYP32 63	23	102	168	16.5	11	8	-	2	Prensa fio	150	313	349
BYP32 100	23	102	168	16.5	11	8	-	2	Prensa fio	150	313	349
BYP32 160	30	130	215	24	15	9	6.5	3	M6x15	150	323	359
BYP32 250	45	182	246	22.5	20	10	9	3	M8x25	250	353	389
BYP32 400	45	182	246	28.5	25	12.5	11	3	M10x25	250	353	389
BYP32 630	65	260	301	31.5	30	15.5	11	6	M10x30	330	487	520
BYP32 1000	65	260	301	36.5	35	16.5	14	6	M12x35	330	487	520
BYP32 1250	85	344	516	49.5	50	15	18	10	M16x50	450	624	667
BYP32 1600	85	344	676	-	-	-	-	10	-	450	624	667

1) PARAFUSOS PARA FIXAÇÃO FORNECIDOS COM A CHAVE

2) TORQUE INDICADO PARA OS PARAFUSOS DE CONEXÃO VIDE PÁGINA 18 E 19

3) DISTÂNCIA MÍNIMA COM ACIONAMENTO EXTERNO DIRETO NO EIXO DA CHAVE

4) DISTÂNCIA MÍNIMA COM ACIONAMENTO EXTERNO + EIXO PROLONGADOR