

EQUES® 60Classic

Sammelschienenadapter
 Busbar adapter
 Adaptador
 Adaptateur
 Adattatore
 母线转接器



Achtung: Vor Installations- oder Servicearbeiten Stromversorgung unterbrechen, um Unfälle zu vermeiden. Die Geräte müssen in einem passenden Gehäuse eingebaut und gegen Verschmutzung geschützt werden. Inbetriebsetzung und Wartung nur durch Fachpersonal!

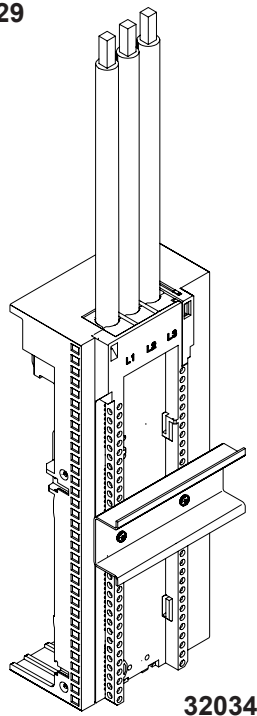
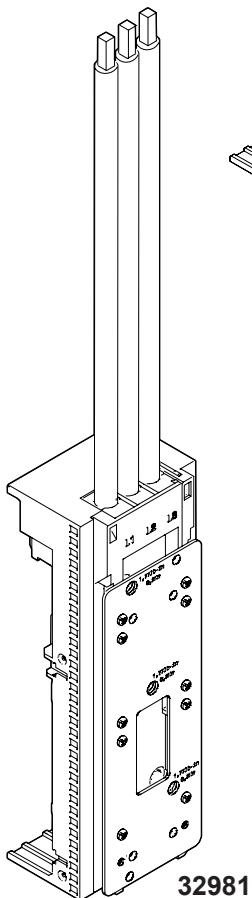
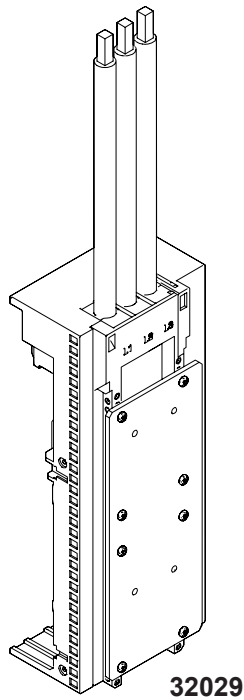
Attention: To prevent electrical shock, disconnect from power source before installing or servicing. Install in suitable enclosure. Keep free from contaminants. To be commissioned and maintained only by qualified personnel!

Atención: Con el objeto de evitar accidentes, hay que desconectar la alimentación eléctrica antes de realizar el montaje y la puesta en marcha. Debe instalarse en una caja o armario apropiado. Debe protegerse el producto de los ambientes agresivos. La puesta en marcha y el mantenimiento ha de hacerlo exclusivamente por personal especializado!

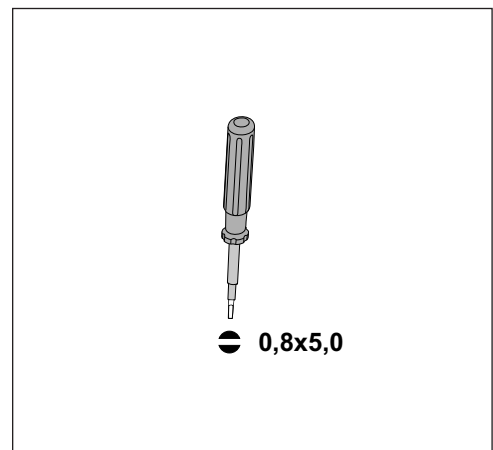
Attention: Avant le montage et la mise en service, couper l'alimentation secteur afin d'éviter tout accident. Prévoir une mise en coffret ou armoire appropriée, protéger le produit contre les environnements agressifs. Mise en service en entretien: seulement par du personnel spécialisé!

Attenzione: Per prevenire infortuni, togliere tensione prima dell'installazione o manutenzione. Installare in custodia idonea. Tenere lontano da contaminanti. Messa in servizio e manutenzione solo da personale specializzato!

注意: 安装前或检修前应切断电源, 以防事故。开关应安装在适合的箱体, 同时应 做好防污染保护。只有专业人员才能做运行、维护、保养的工作。

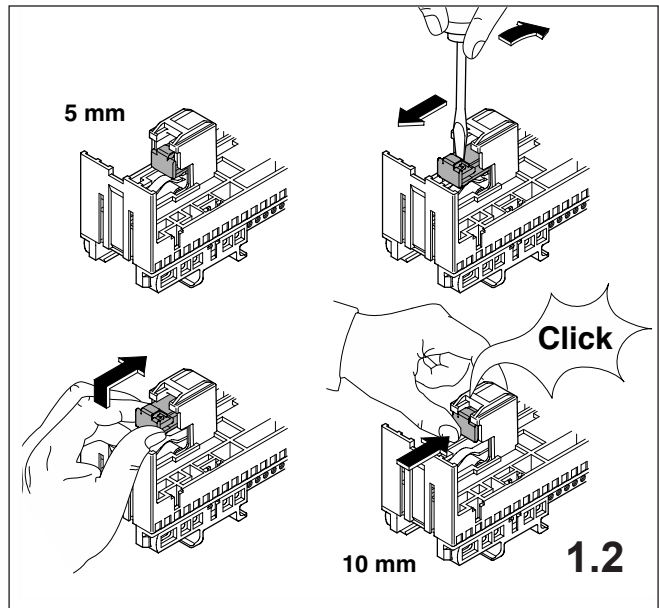
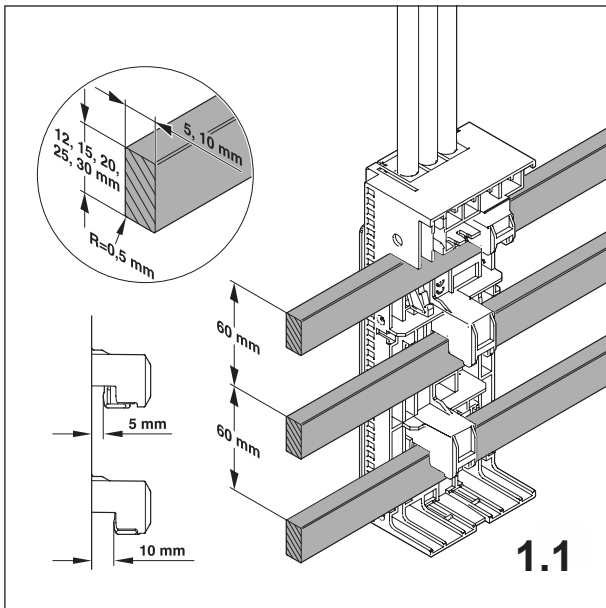


Werkzeuge Tools



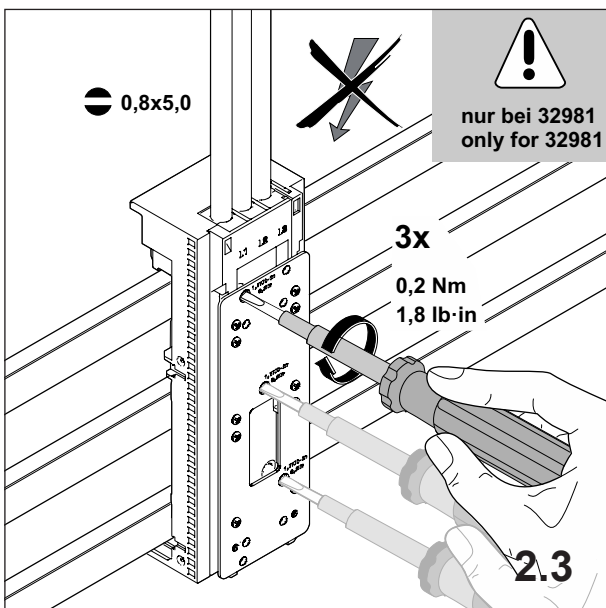
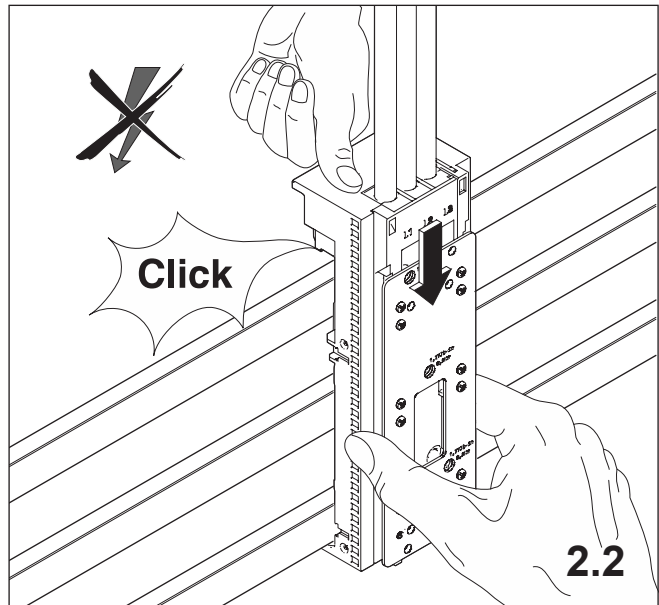
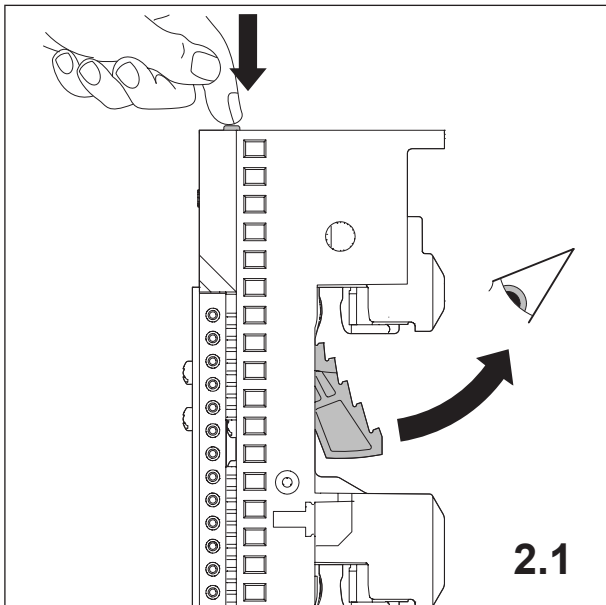
1. Schienensystem

Busbar system



2. Montage Adapter

Assembly of the adapter



3. Adaptervarianten

Variants of adapters

32029

Technical drawing of adapter 32029. It shows a vertical rectangular component with three terminals labeled L1, L2, and L3 at the top. The main body has a height of 88,5 mm and a width of 25,4 mm. There are four screws on the front face, with a callout indicating they are 4 x 6/32" and should be tightened to 0,9 Nm (8 lb-in).

für/for Siemens HGG, LGG, NGG

4 x 6/32"

0,9 Nm
8 lb-in

88,5 mm

25,4 mm

3.1

32981

Technical drawing of adapter 32981. It shows a vertical rectangular component with three terminals labeled L1, L2, and L3 at the top. The main body has a height of 155 mm and a width of 30 mm. There are two screws on the front face, with a callout indicating they are 2x M4 and should be tightened to 1,2-1,4 Nm (10,6-12,4 lb-in).

für/for Siemens Sirius S3

2x M4

1,2-1,4 Nm
10,6-12,4 lb-in

155mm

30 mm

3.2

32034

Technical drawing of adapter 32034. It shows a vertical rectangular component with three terminals labeled L1, L2, and L3 at the top. The component has a complex front face with multiple rows of screws and a central rectangular cutout.

für/for Schneider Electric TeSys GV4

3.3

4. Demontage Adapter

Disassembly of the adapter

