

EQUES®60Classic

Sammelschienenadapter
 adapter
 adaptador
 adaptateur pour jeux de barres
 adattatori per interruttori
 母线转接器



Achtung: Vor Installations- oder Servicearbeiten Stromversorgung unterbrechen, um Unfälle zu vermeiden. Die Geräte müssen in einem passenden Gehäuse eingebaut und gegen Verschmutzung geschützt werden. Inbetriebsetzung und Wartung nur durch Fachpersonal!

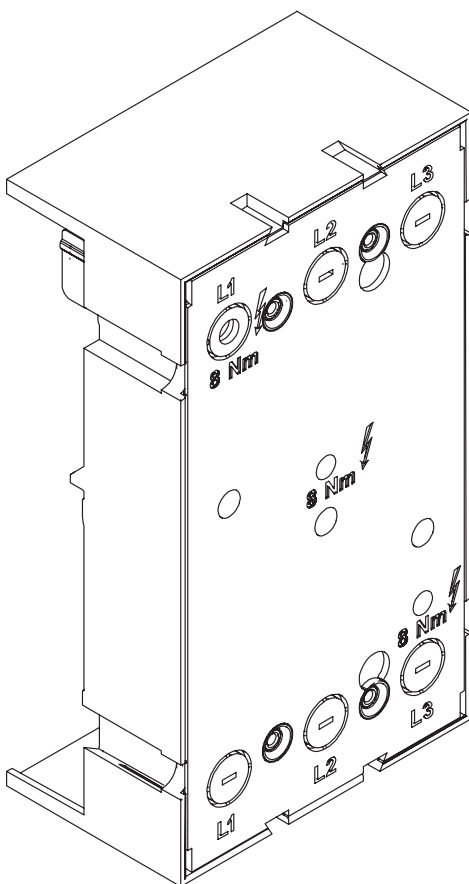
Attention: To prevent electrical shock, disconnect from power source before installing or servicing. Install in suitable enclosure. Keep free from contaminants. To be commissioned and maintained only by qualified personnel!

Atención: Con el objeto de evitar accidentes, hay que desconectar la alimentación eléctrica antes de realizar el montaje y la puesta en marcha. Debe instalarse en una caja o armario apropiado. Debe protegerse el producto de los ambientes agresivos. La puesta en marcha y el mantenimiento ha de hacerlo exclusivamente por personal especializado!

Attention: Avant le montage et la mise en service, couper l'alimentation secteur afin d'éviter tout accident. Prévoir une mise en coffret ou armoire appropriée, protéger le produit contre les environnements agressifs. Mise en service et entretien: seulement par du personnel spécialisé!

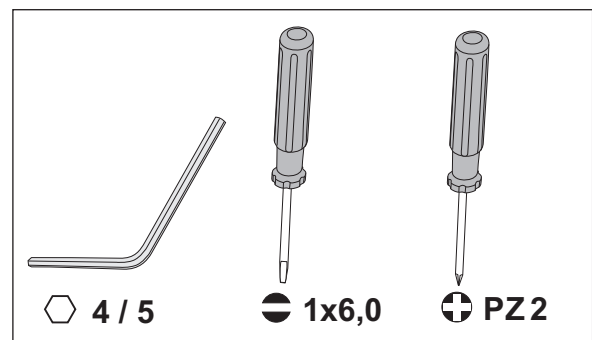
Attenzione: Per prevenire infortuni, togliere tensione prima dell'installazione o manutenzione. Installare in custodia idonea. Tenere lontano da contaminanti. Messa in servizio e manutenzione solo da personale specializzato!

注意：安装前或检修前应切断电源，以防事故。开关应安装在适合的箱体内部，同时应做好防污染保护。只有专业人员才能做运行、维护、保养的工作。



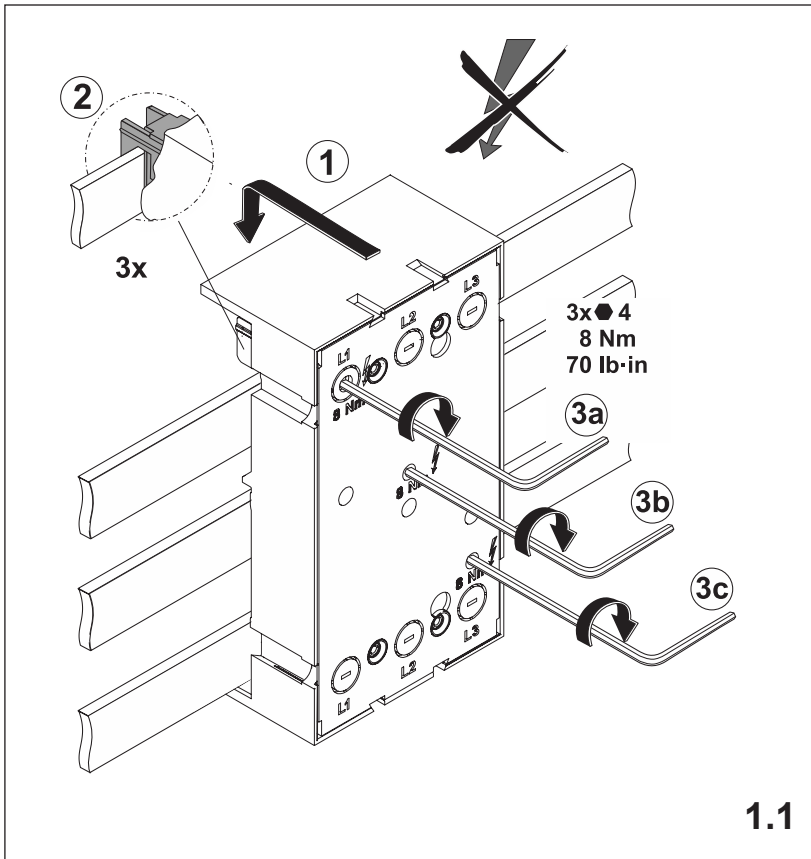
Notwendige Werkzeuge

Required tools



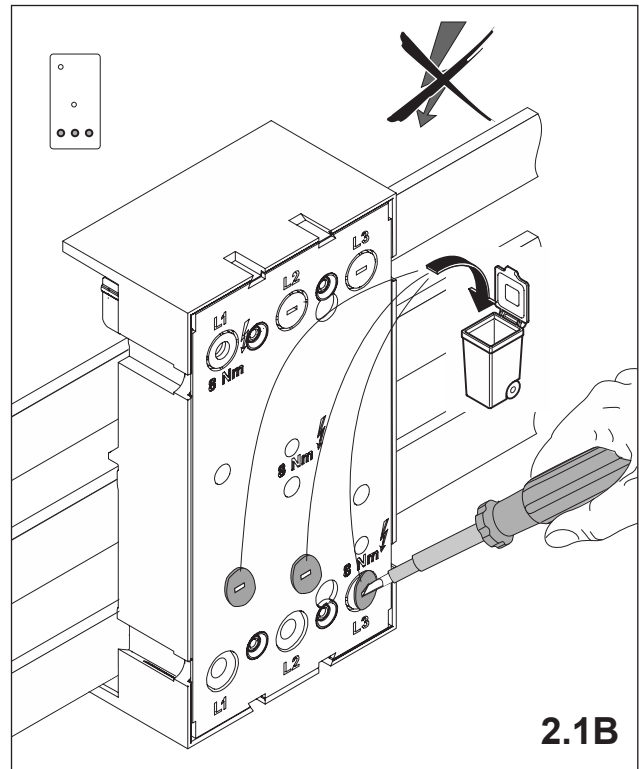
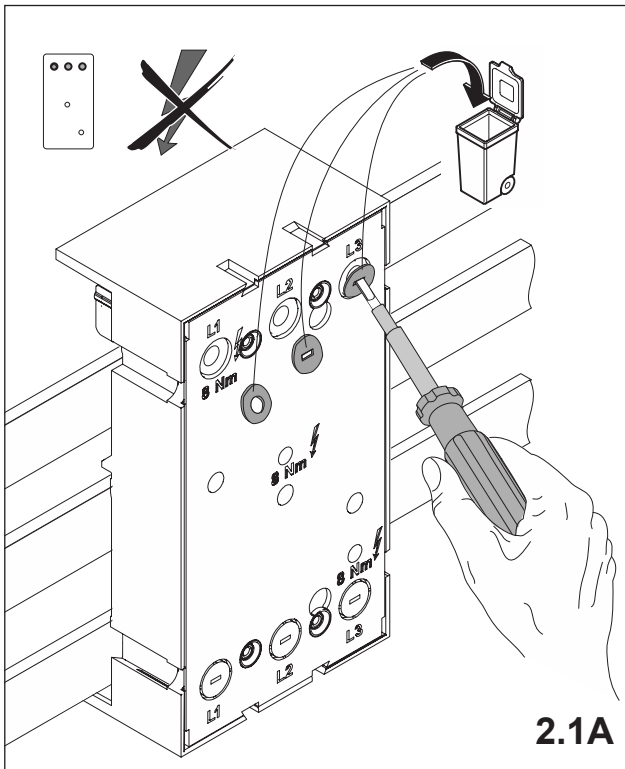
1. Montage EQUES®60Classic

Assembly EQUES®60Classic



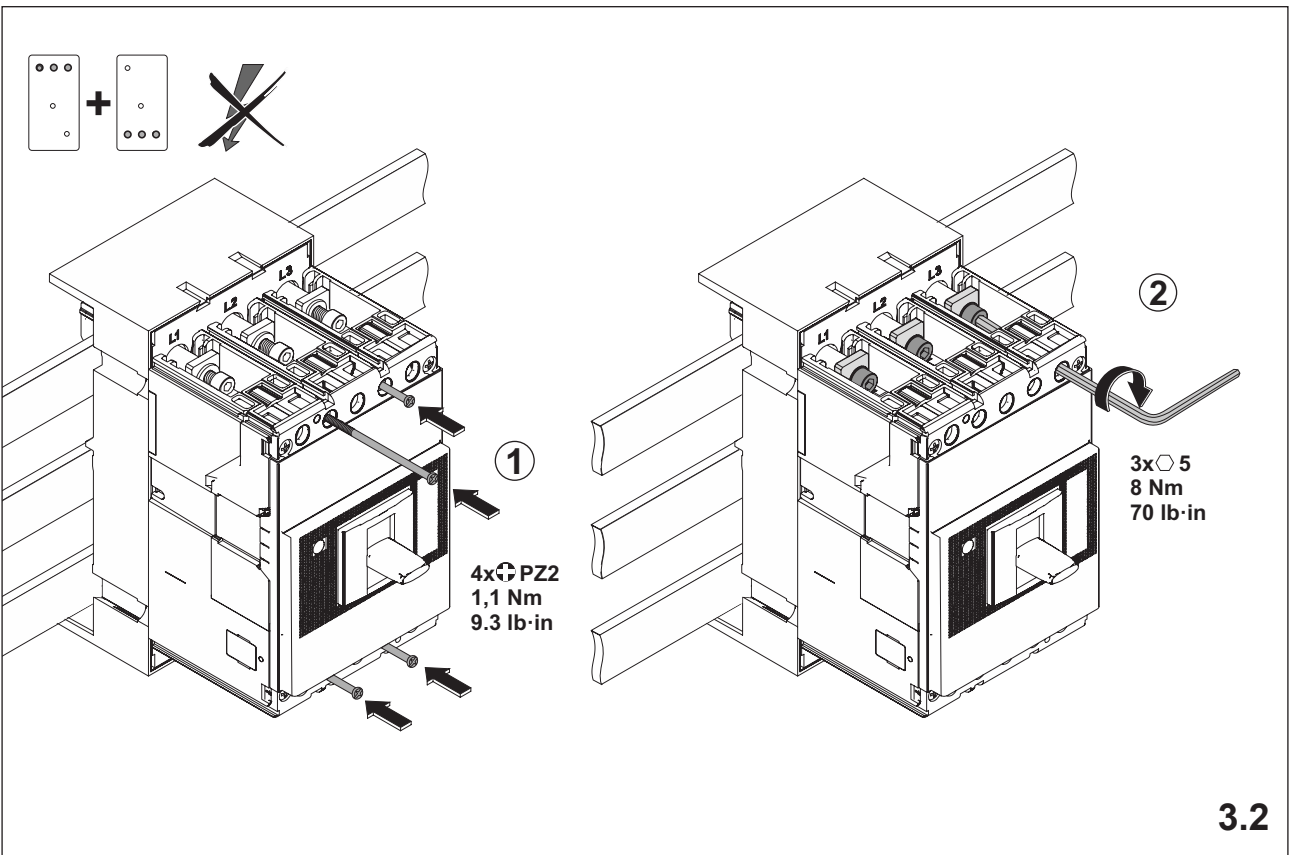
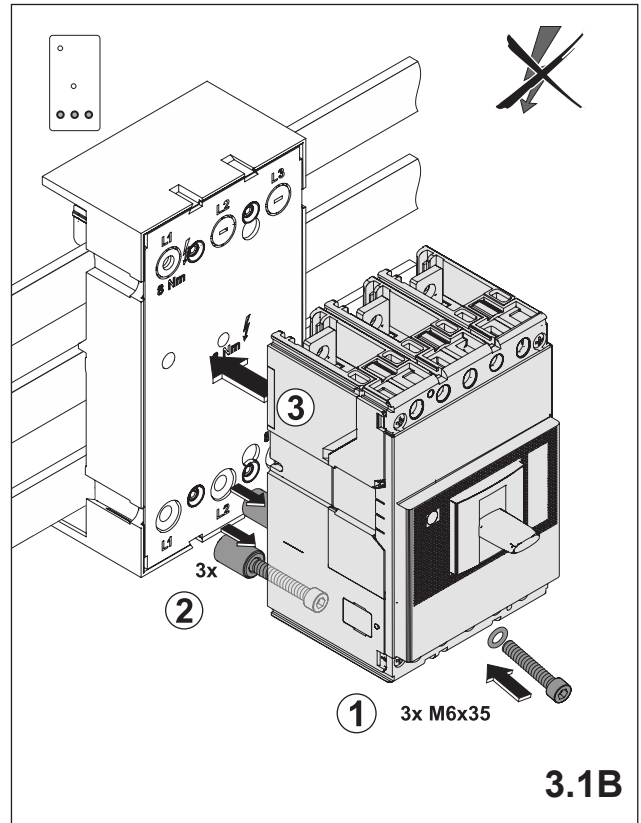
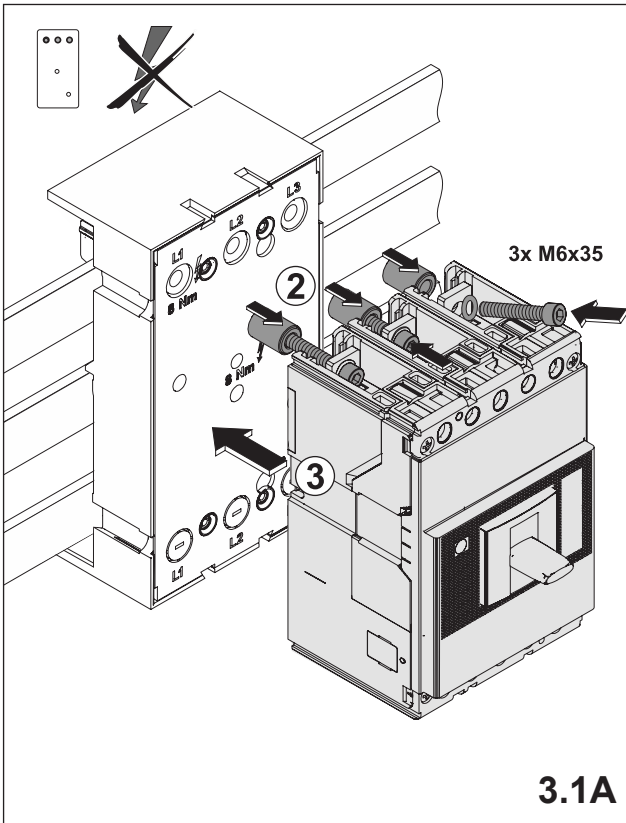
2. Verbindung oben / unten

Connection top / bottom



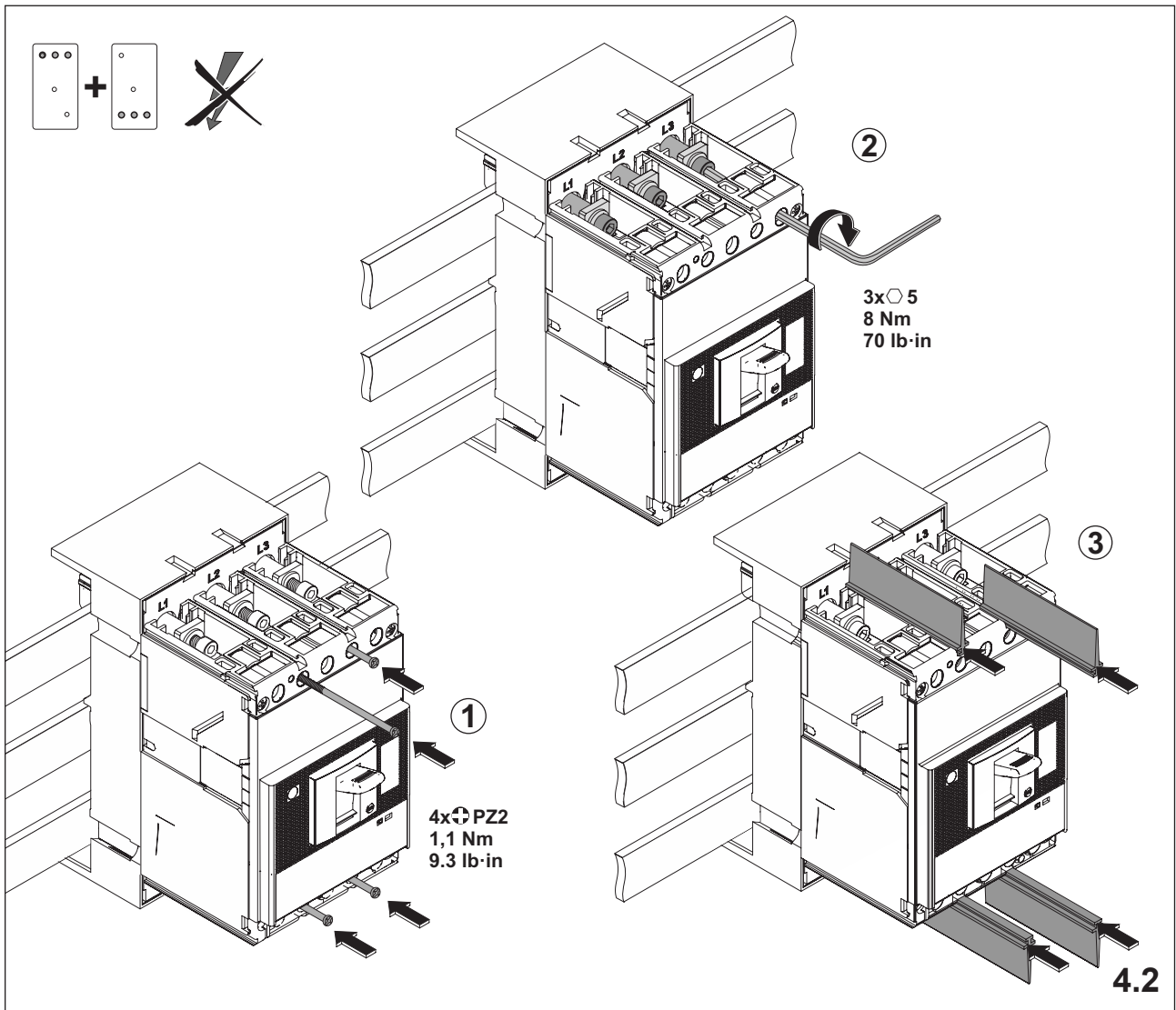
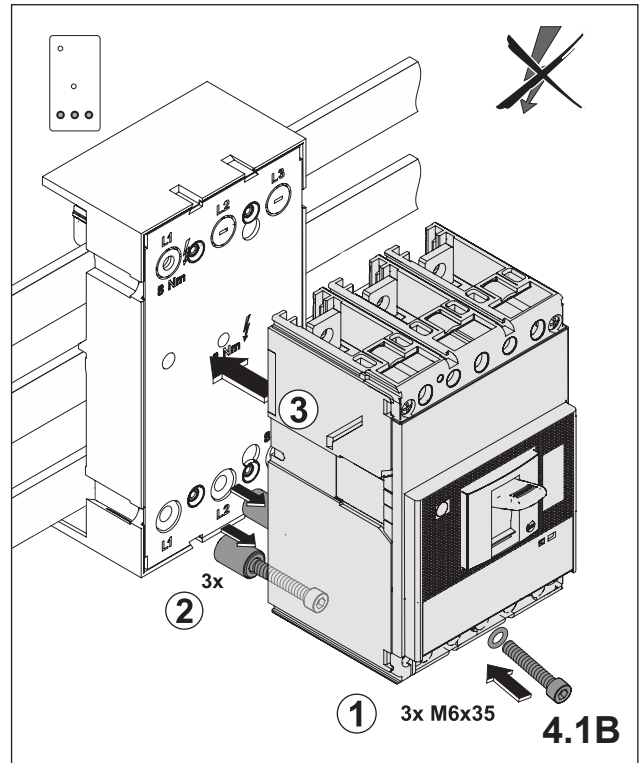
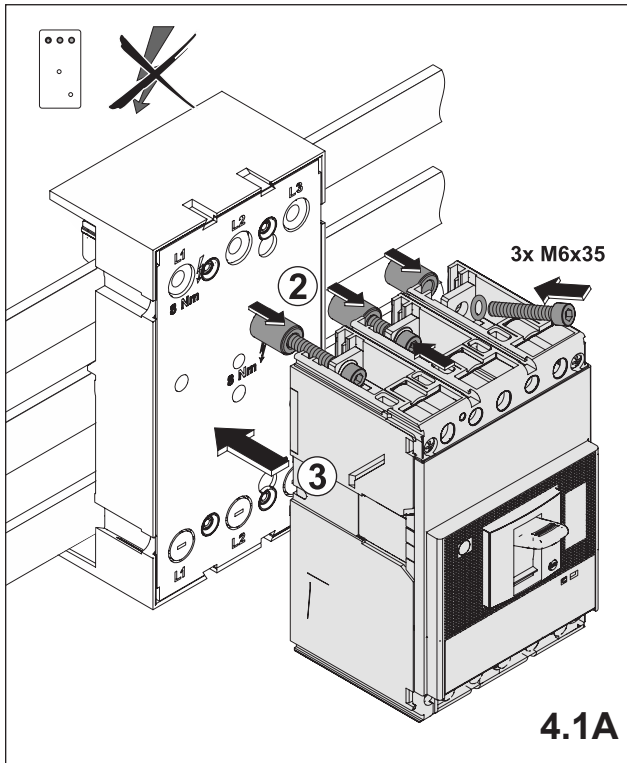
3. Montage ABB XT4

Assembly ABB XT4



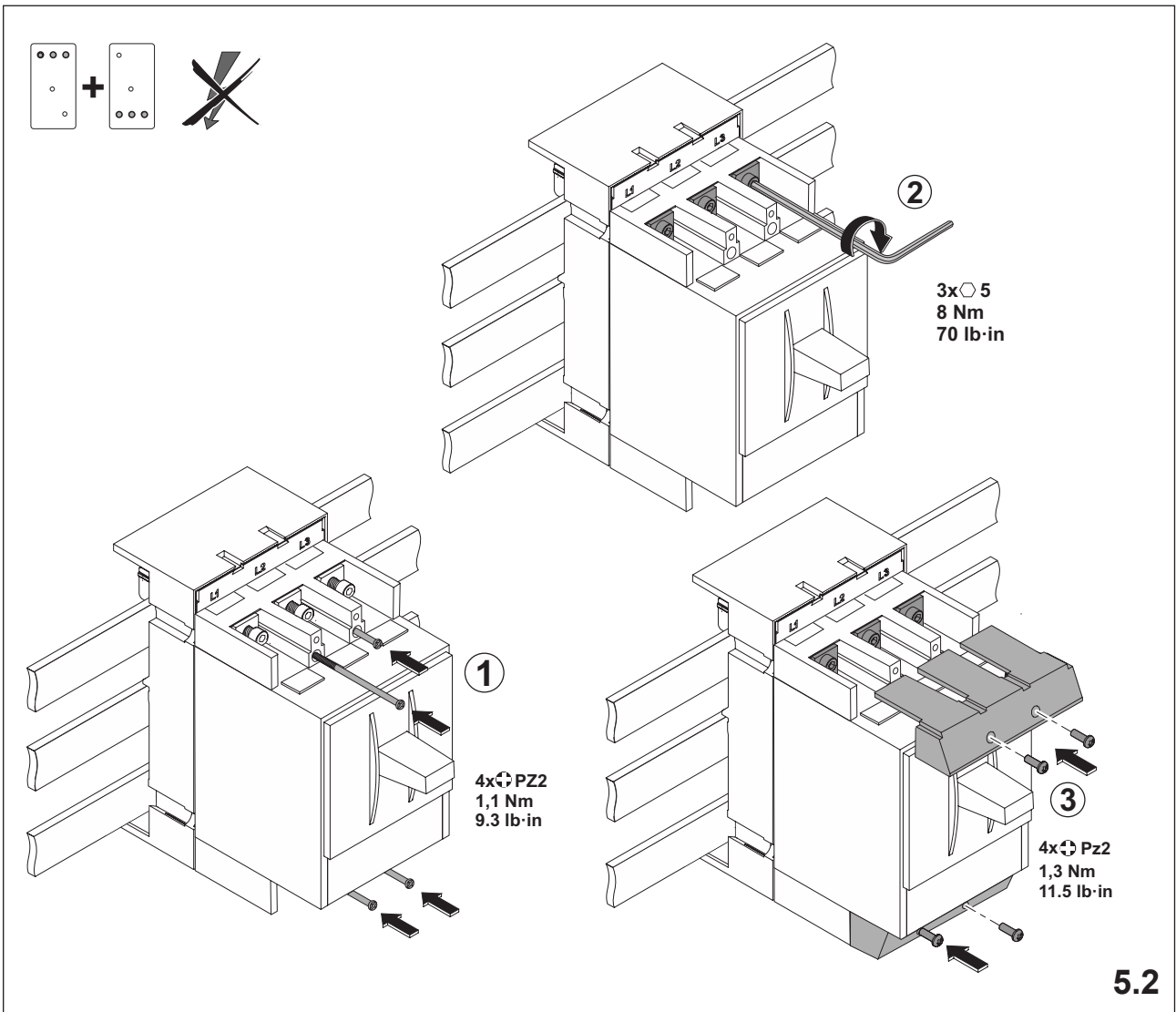
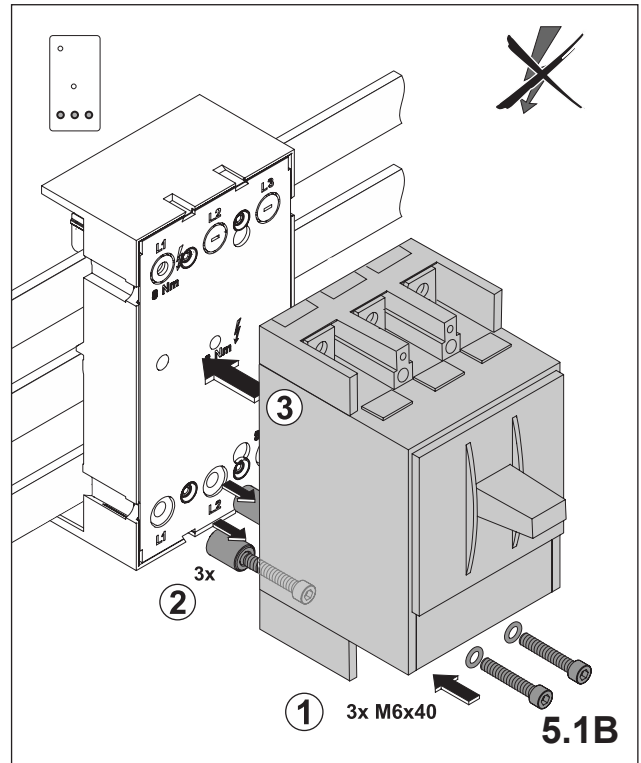
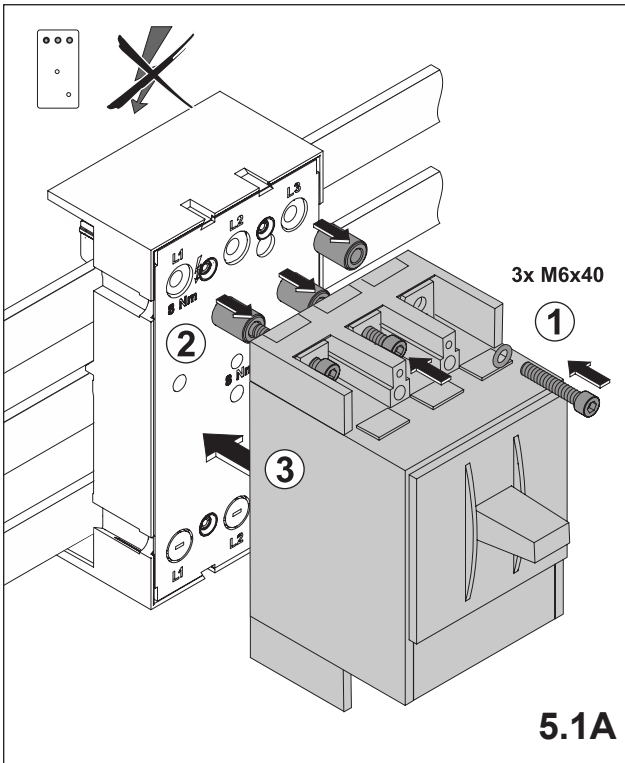
4. Montage Allen-Bradley 140G-J

Assembly Allen-Bradley 140G-J



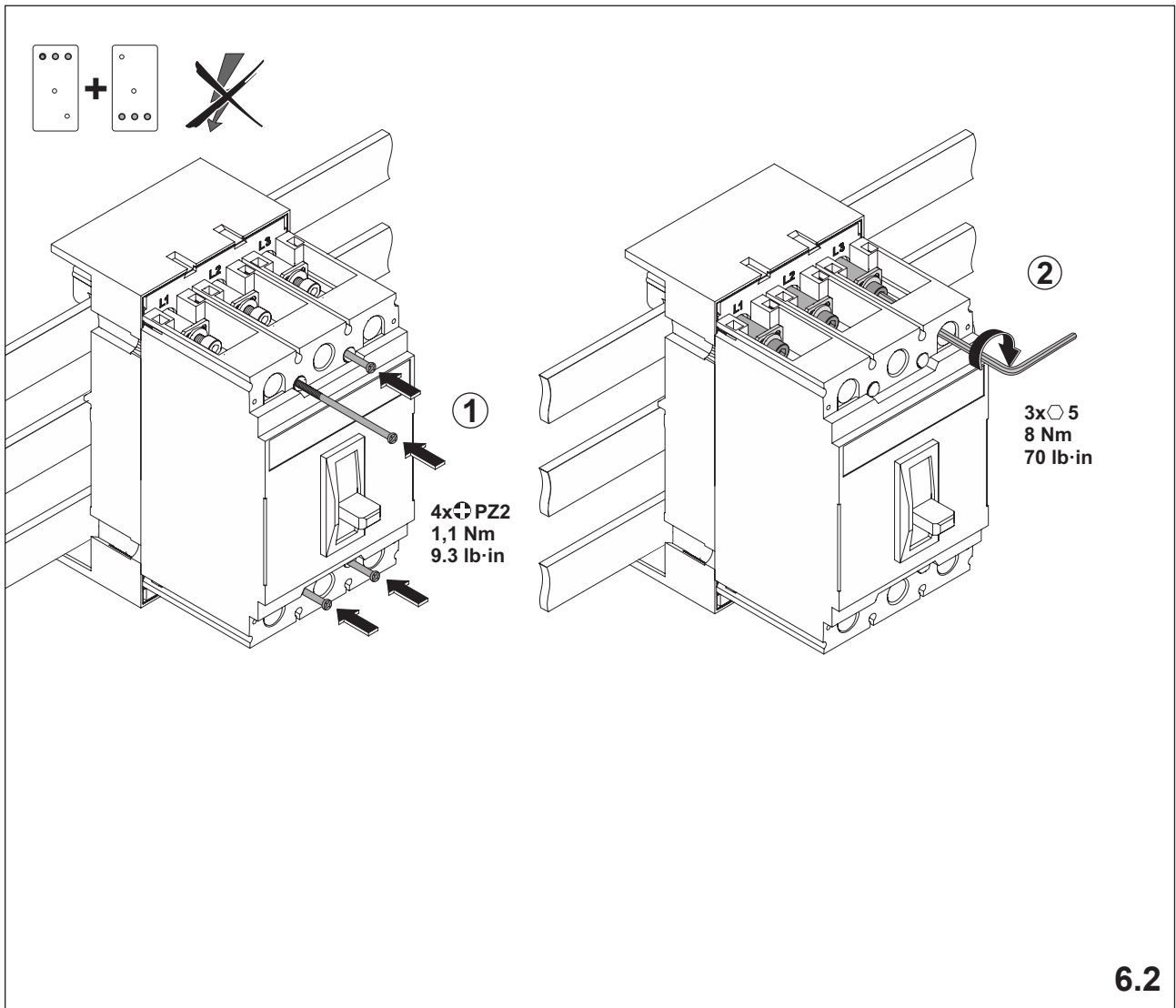
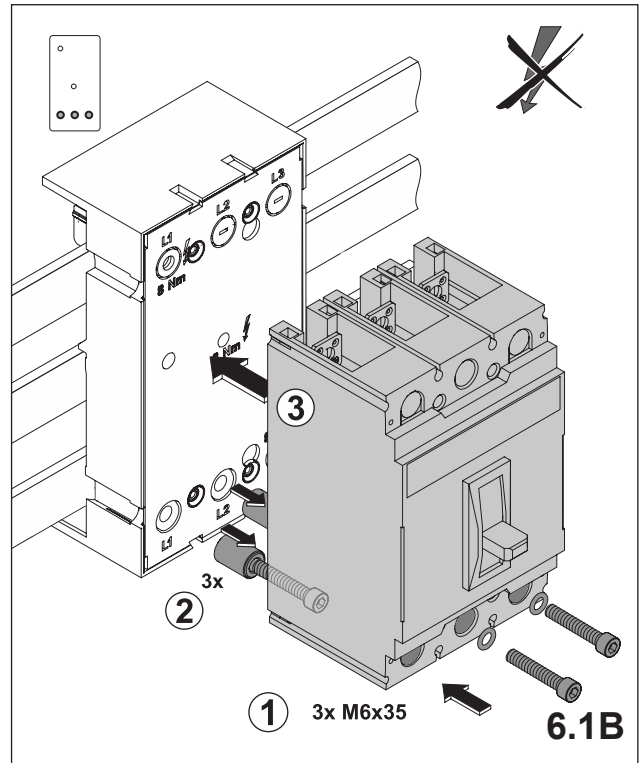
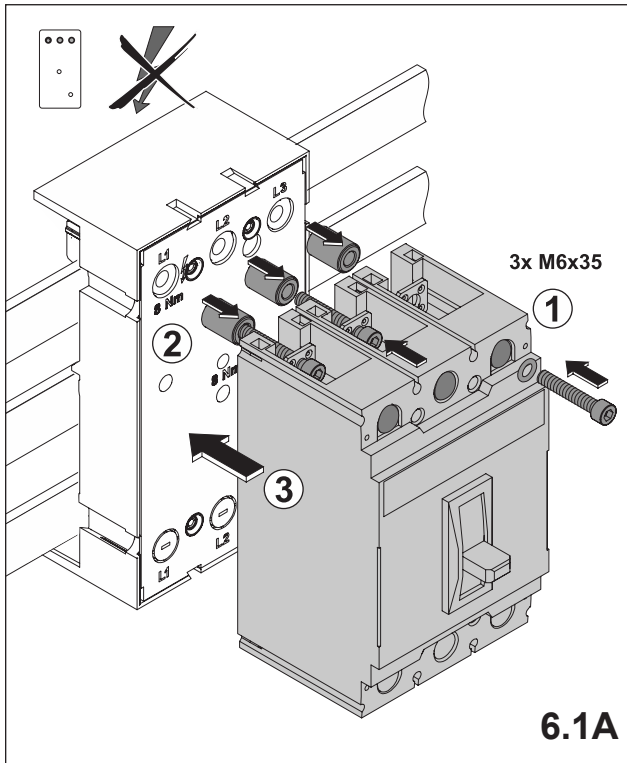
5. Montage Eaton NZM2-XKR40 / XKR4U

Assembly Eaton NZM2-XKR40 / XKR4U



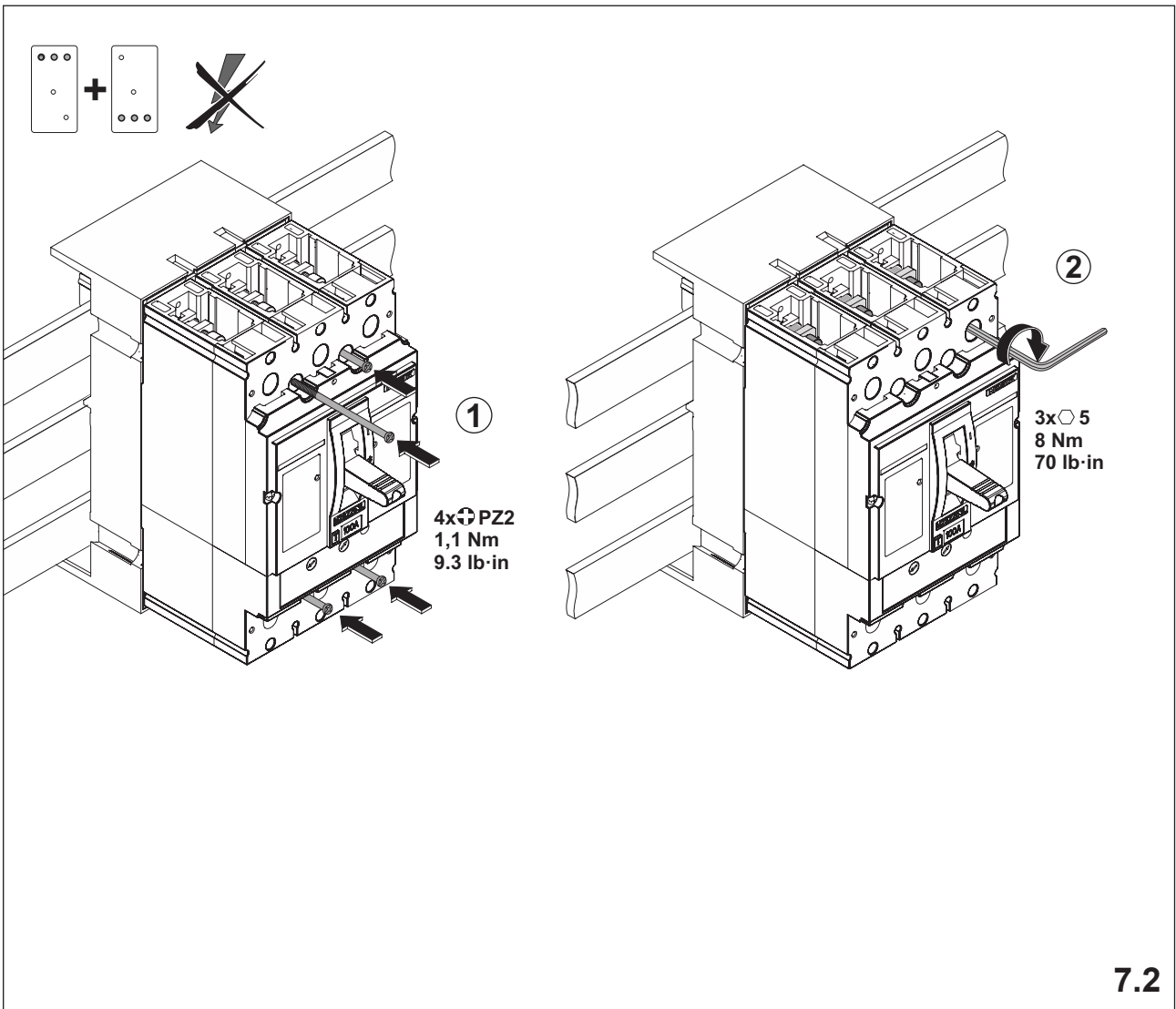
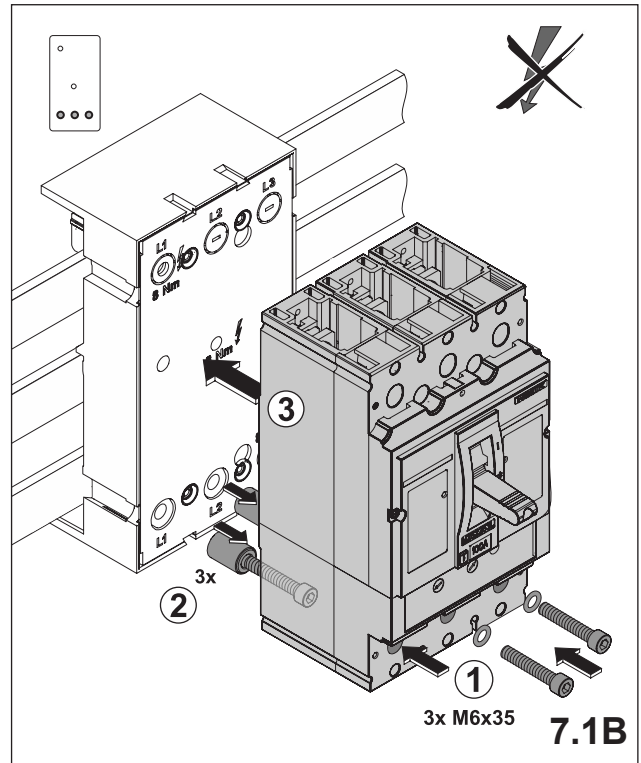
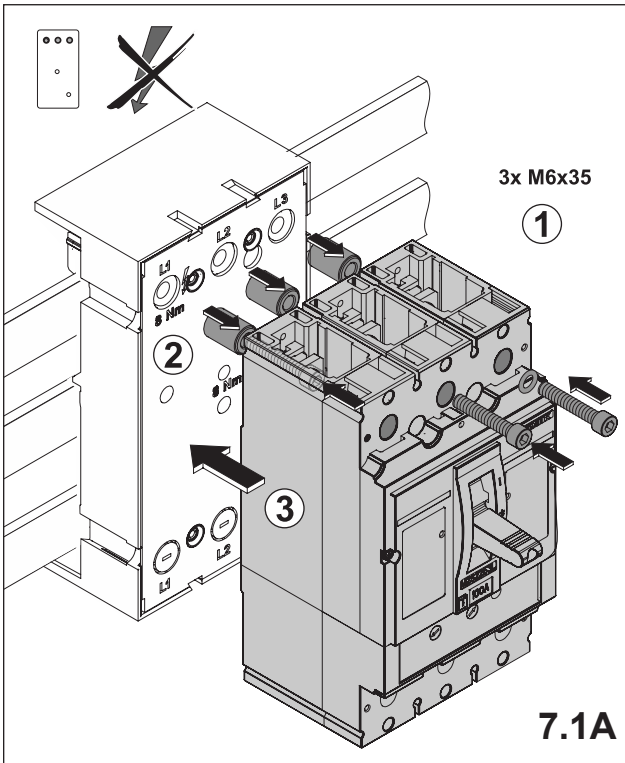
6. Montage LS Electric UTS250

Assembly LS Electric UTS250



7. Montage Noark M2

Assembly Noark M2



Notizen

A large grid of small dots for taking notes, consisting of 20 columns and 30 rows.