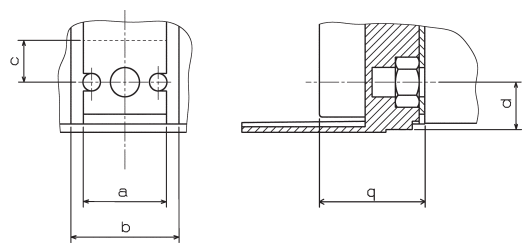
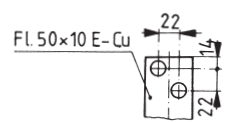
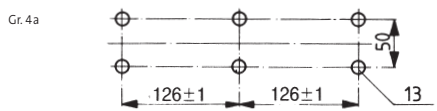
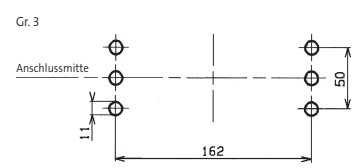
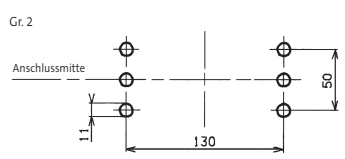
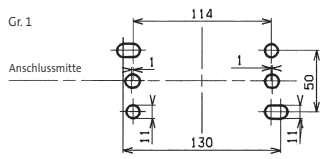
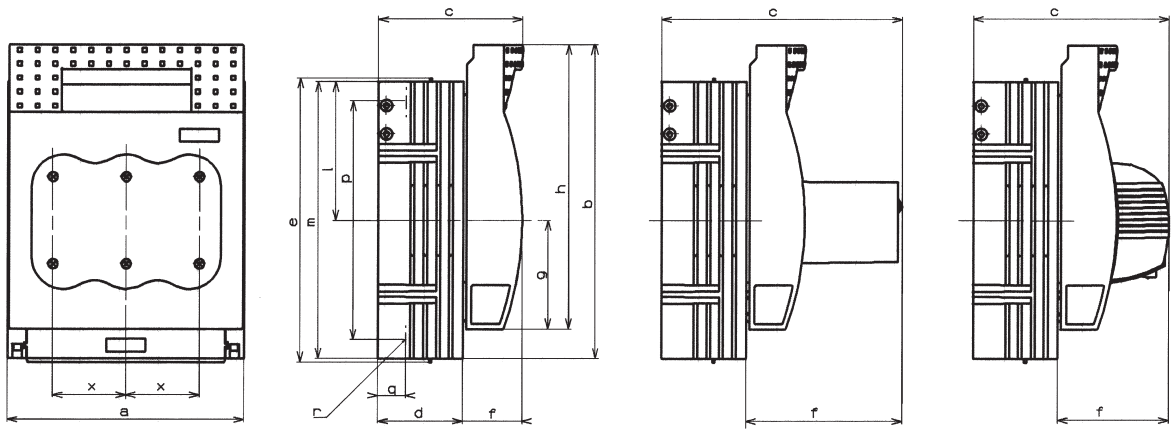


	Gr.	a	b	c	d	e	f	g	h	l	m	p	q	r	x
<b>33 201</b>	1	184	243	111.5	66	220	45.5	84	220	107	214.5	185	21.5	M10	57
<b>33 202</b>	2	210	288	128	80	—	48	92	249	124	255	210	25	M10	65
<b>33 203</b>	3	256	300	142.5	94.5	—	48	98.5	259	127.5	267	210	30	M12	81
<b>33 204</b>	4 a	378	352	233	151	—	75	104	256	192	352	—	39	2xM12	126
<b>33 149</b>	1	184	243	186.5	66	220	120.5	84	220	107	214.5	185	21.5	M10	57
<b>33 150</b>	2	210	288	203	80	—	123	92	249	124	255	210	25	M10	65
<b>33 151</b>	3	256	300	217.5	94.5	—	123	98.5	259	127.5	267	210	30	M12	81
<b>33 330</b>	1	184	243	152	66	220	86	84	220	107	214.5	185	21.5	M10	57
<b>33 331</b>	2	210	288	168.5	80	—	88.5	92	249	124	255	210	25	M10	65
<b>33 332</b>	3	256	300	183	94.5	—	88.5	98.5	259	127.5	267	210	30	M12	81



Gr.	a	b	c	d	q
00	20	25	14.5	10	17
1	30	39	17	17	21
2	33	42	19	19.5	25
3	40	52	20	24	30