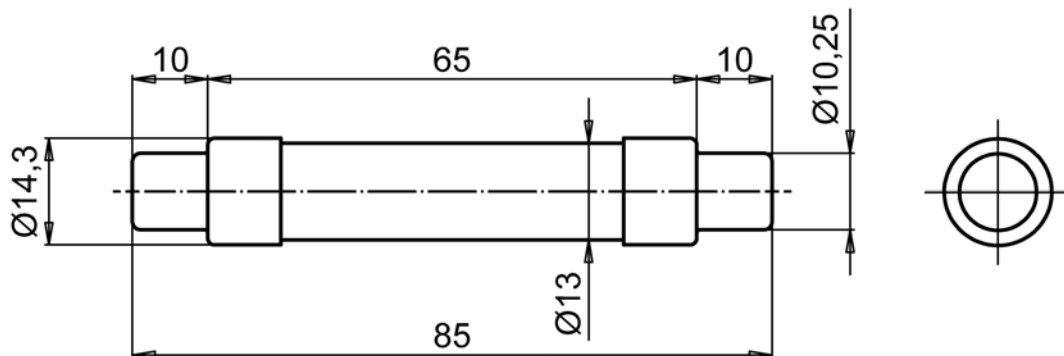
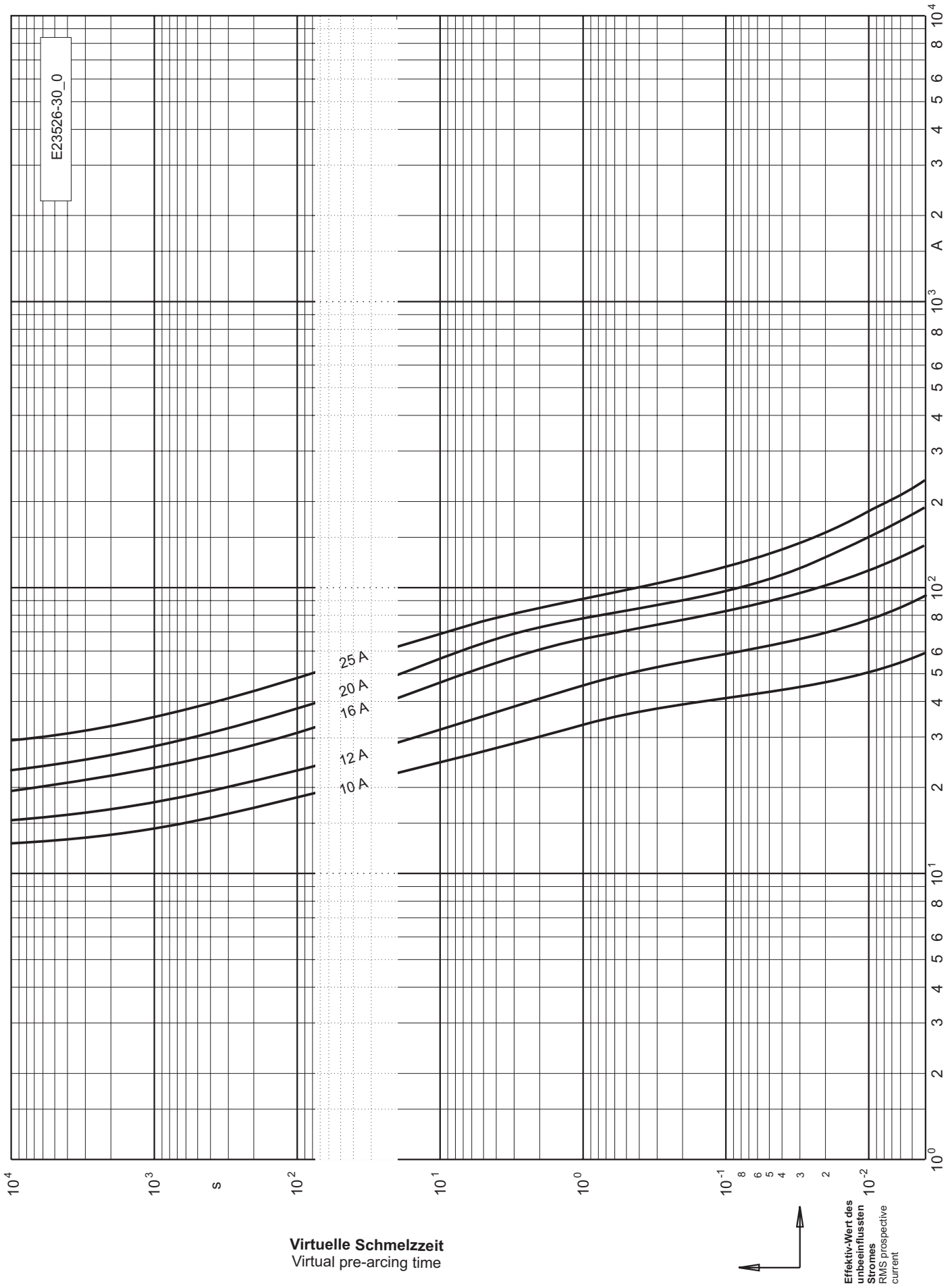


**Abmessungen**  
Dimensions

<b>Art.-Nr.:</b> part-no	<b>50 238 26</b>
<b>Größe:</b> size	<b>10/14 x 85 mm</b>
<b>Bemessungsstrom:</b> rated current	<b>10 - 25 A</b>





**Applikationskoeffizienten**  
Application coefficients

<b>a</b>	<b>A2</b>	<b>B1</b>	<b>B2</b>	<b>Cf3</b>	<b>N</b>
<b>130</b>	<b>0,9</b>	<b>1,25</b>	<b>0,5</b>	<b>0,8</b>	<b>1,5</b>

**Elektrische Daten**  
Electrical data

<b>Bemessungs- strom</b> Rated current	<b>Bemessungs- spannung</b> Rated voltage IEC 60 077 - 5	<b>Prüfausschalt- spannung</b> Breaking test voltage	<b>Bemessungs- ausschaltvermögen</b> Rated breaking capacity	<b>Schmelzintegral</b> Pre-arcing i <sup>2</sup> t-value	<b>Ausschaltintegral</b> Total i <sup>2</sup> t-value @ Breaking test voltage	<b>Leistungsabgabe</b> Power loss
[ A ]	[ V ]	[ V ]		[ A <sup>2</sup> s ]	[ A <sup>2</sup> s ]	[ W ]
10	1100	1100	30kA @ DC 1100V (1ms)	5	24	3,3
12	1100	1100	30kA @ DC 1100V (1ms)	13	62	3,5
16	1100	1100	30kA @ DC 1100V (1ms)	30	143	3,8
20	1100	1100	30kA @ DC 1100V (1ms)	53	250	4,7
25	1000	1000	30kA @ DC 1000V (1ms)	82	320	5,9