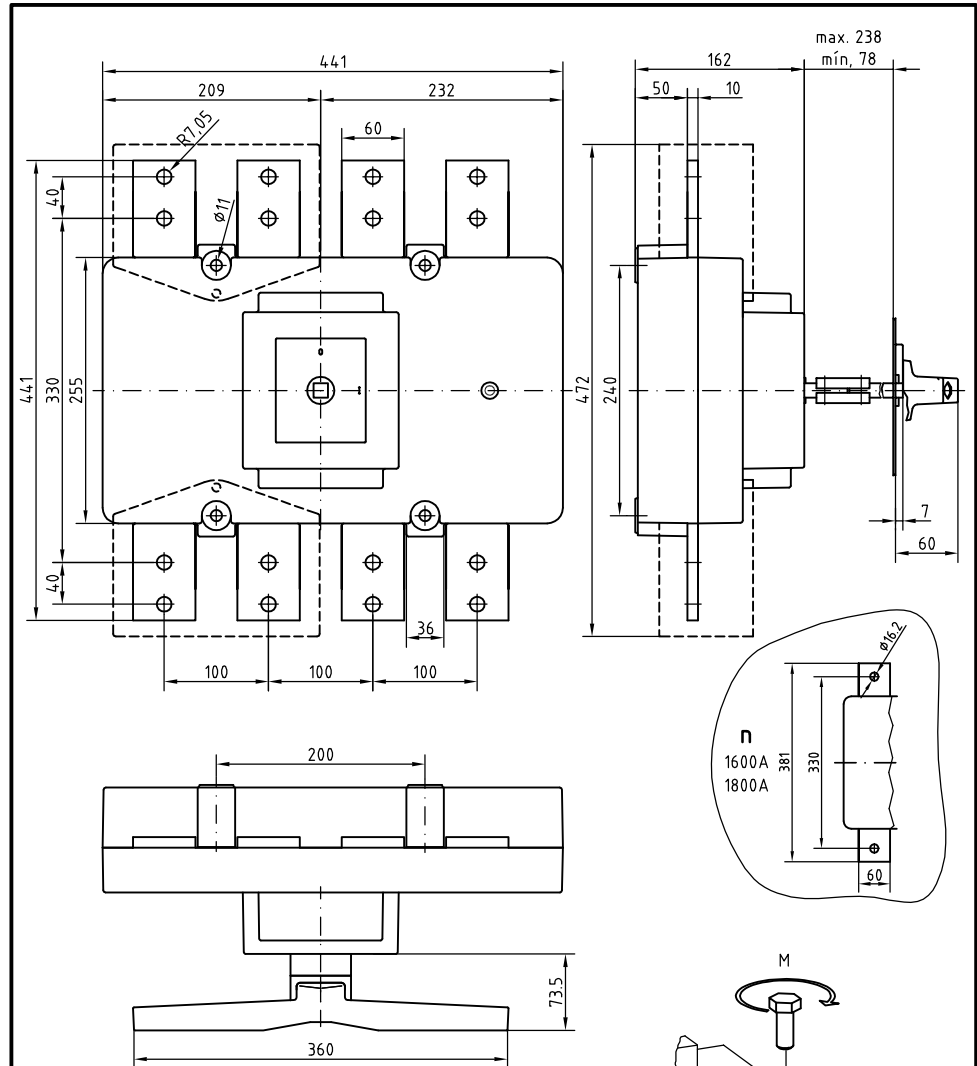


I _{th}	a	c	e	f	g	h	i	j	k	l	m	n	o	r		φ _p	q	φ _t	M	N·m	s max. (Cu)mm ²	L	
														max.	min.							h max. (Cu)mm	l max. (Cu)mm
630 A	275	65	130	145	160	205	235	30	290	245	5	30	121	119	18	6,5	25	M10	24	2x240	2x5	40	
800 A	275	65	130	145	160	205	235	30	290	245	5	30	121	119	18	6,5	25	M10	24	2x240	2x5	50	
1250 A	325	75	150	175	190	250	290	40	340	285	8	39	137	108	18	9	30	M14	45	2x300	2x10	50	



I _{th}	h	i	x	φ _t	M	N·m	L	
							h max. (Cu)mm	l max. (Cu)mm
1600 A	330	441	40	14,1	M14	55	2x7	80
1800 A	330	441	40	14,1	M14	55	2x7	80